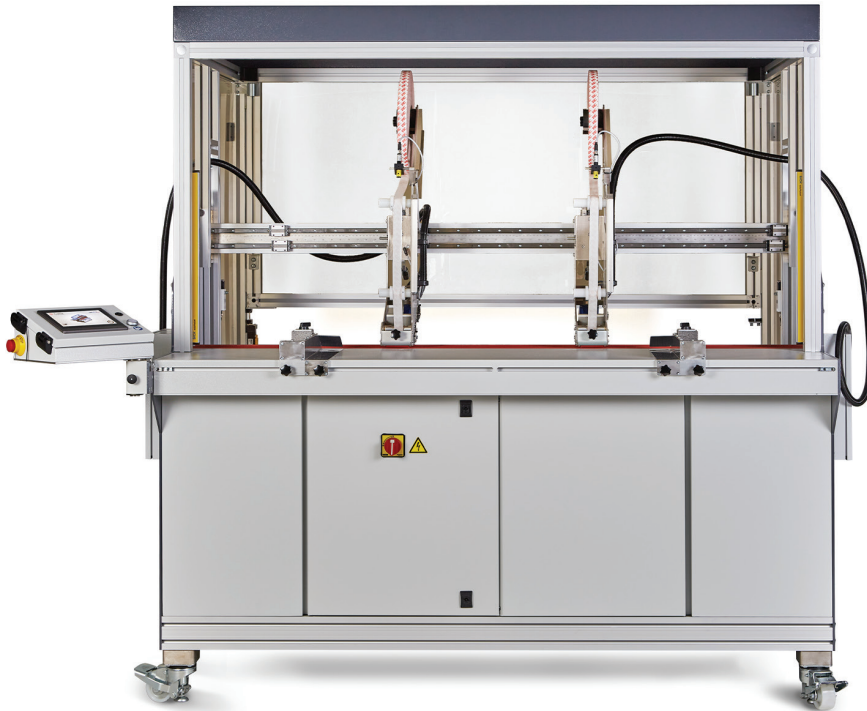


Enimac

Tape Application Made Easy

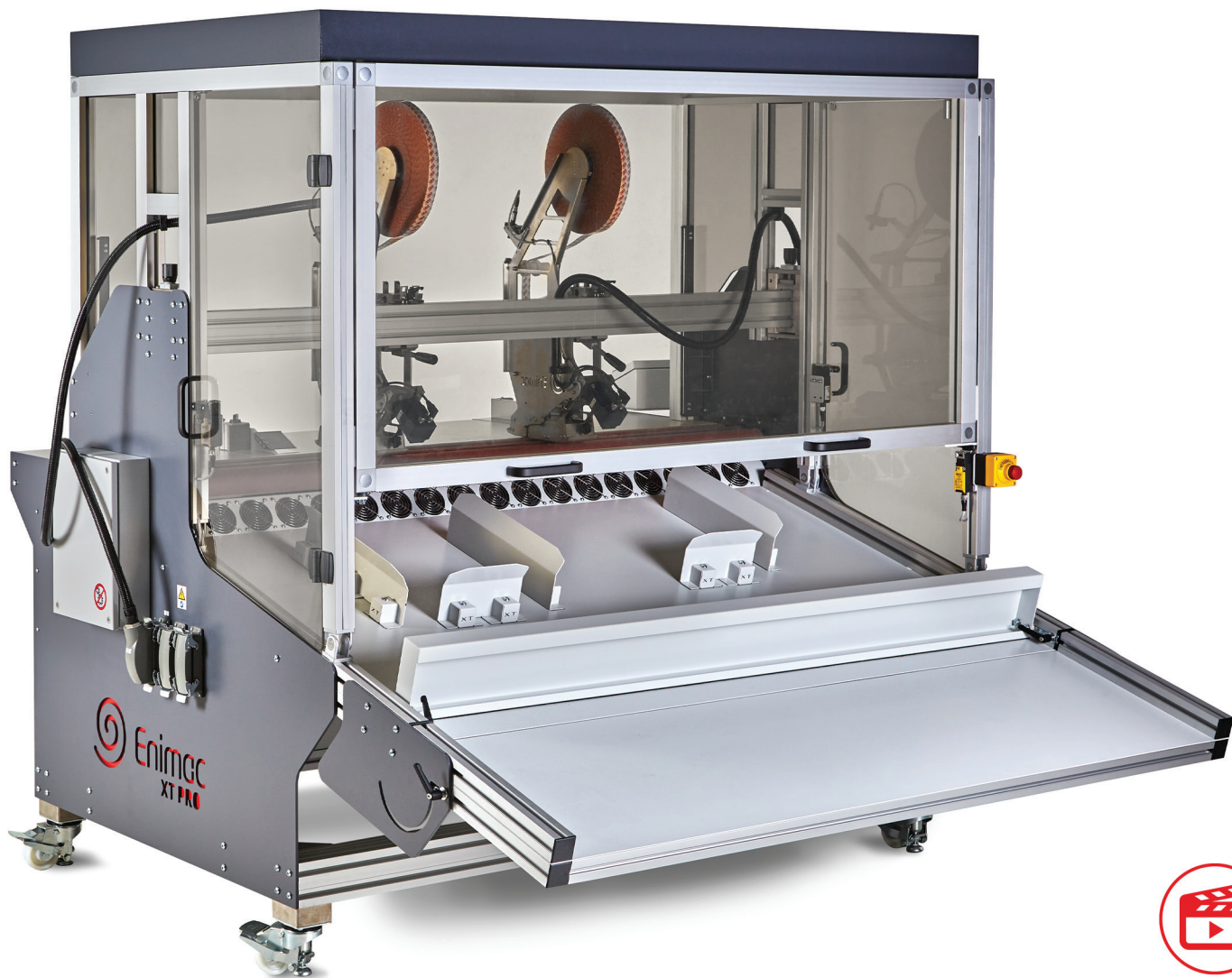


- Plug & Work
- Easy and intuitive operation
- Compact design
- Versatility

ekotech® | Converting
Company

X-TREME PRO

X-TREME PRO

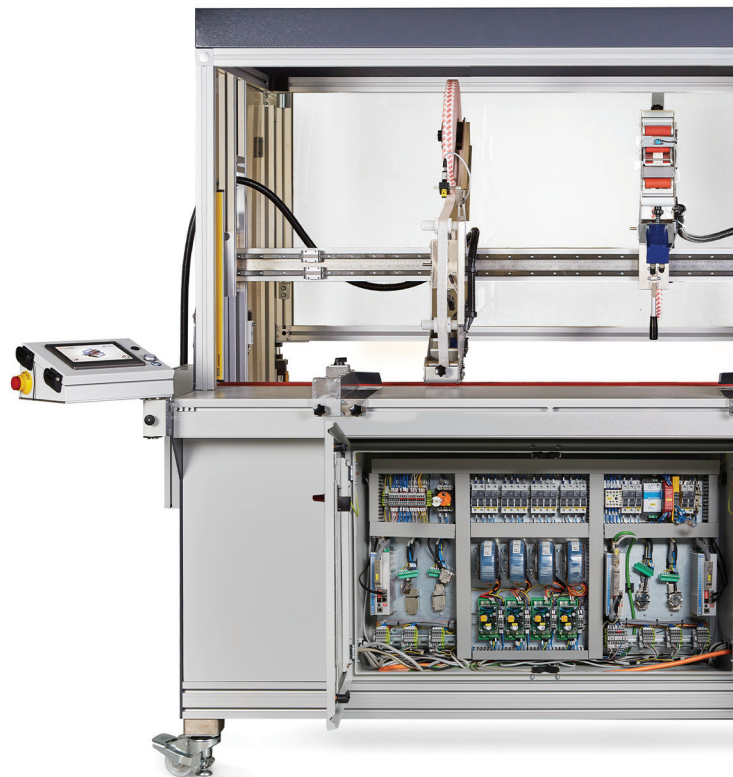
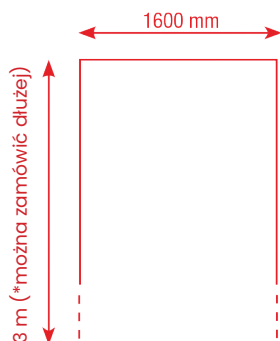


video on Youtube

X-TREME PRO

Large format - up to 1600mm (63") wide and 15mm (just under 5/8") thick: 2 to 6 30mm (1.2") or 60mm (2.4") tape applicators independently programmed on a touchscreen applying multiple differently-configured strips in one pass.

Apply tapes at speeds up to 50m (164')/min. Large (and small) format print, point of sale, packaging, plastics, signage applications.

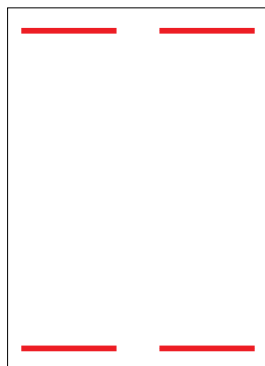


Characteristics	X-TREME PRO
Widest format of substrate (accepted - edges taped)	1600mm (63")
Thickest substrate	15mm (just under 5/8")
Shortest strip of tape	25mm (1")
Longest strip of tape (*can order longer)	3,0m (10')
Maximum number of consecutive tape strips ("spots") per sheet (*can order more)	4
Minimum distance between consecutive tape strips	25mm (1")
Minimum distance between parallel tape strips (with 2 applicators side-by-side)	66mm (2.6")
Structure	Complete mobile unit
Speed	10m (33')/min - 50m (164')/min
Maximum number of tape applicators	6
Standard tape applicator (tape width) 30mm	6mm (0.24") - 30mm (1.2")
Optional tape applicator (tape width) 60mm	6mm (0.24") - 60mm (2.4")

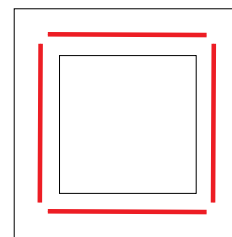
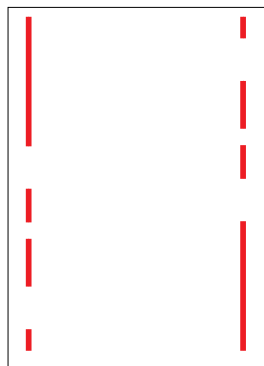
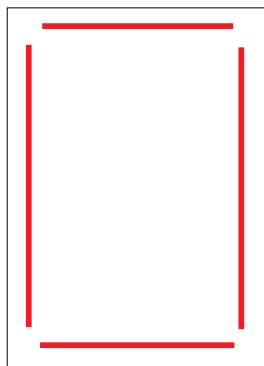
APPLICATION PATTERNS FOR SMALL AND LARGE FORMAT

Our standard machines are used for various product formats: posters, envelopes, pocket folders, packaging, wobblers and free-standing display units. Applying tape on one side, both sides, and all the way around the

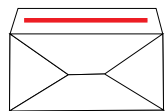
product but also applying several shorter consecutive strips (so-called "spots" of tape), putting the right amount of tape where it's needed.



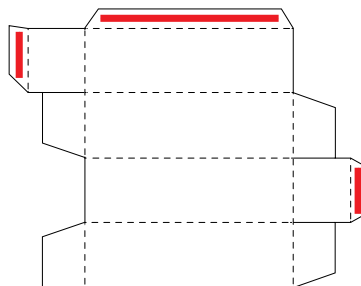
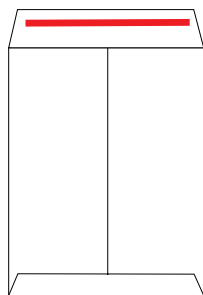
Large posters



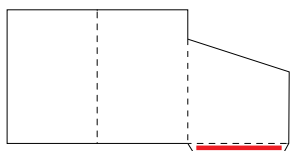
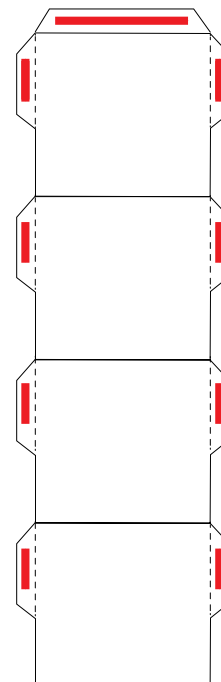
Box windows



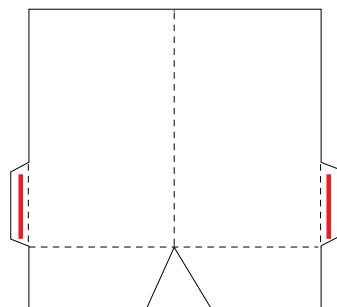
Envelopes



Packaging



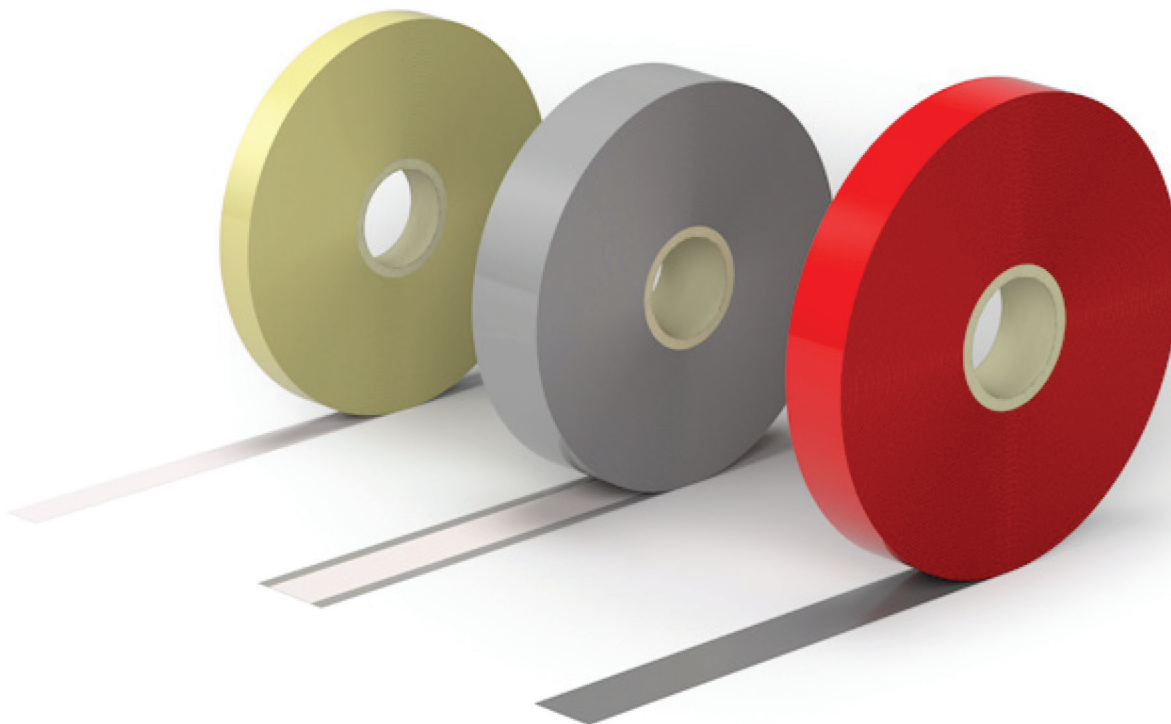
Folders



APPLICABLE TAPES

Some tapes are easier to automate than others, but whether your project requires applying a mono-sided masking tape, a transfer tape, a double-sided modified acrylic adhesive with PET carrier and paper liner, a double-sided polyethylene foam tape with modified acrylate adhesive and paper liner, or a double-sided

tackified acrylic adhesive with PET carrier and a red MOPP-film liner or many others, our applicators are designed to apply many types of tape, including extended liner (aka fingerlift) tapes, and we are continuing to expand our capabilities.



FUNCTIONALITY



Precise micrometric adjustment of the applicator beam height accommodating substrates up to 15mm



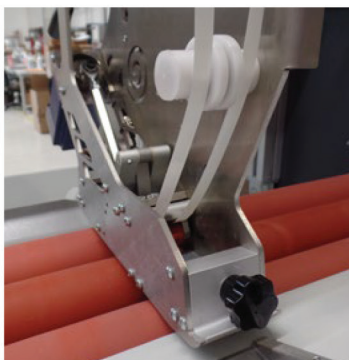
Laser-assisted applicator guidance to quickly position them where tape is required



Multi-job software capable of saving machine settings for up to 100 jobs



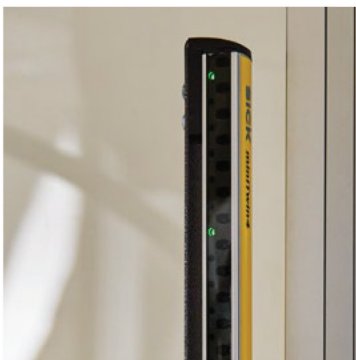
"Automatic zero" on the applicator motors speeds up the set-up process



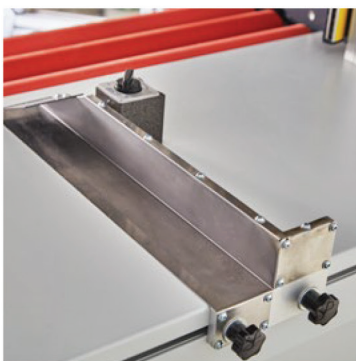
Ability to apply two rolls of tape on the same applicator for close parallel tape strips



The photocell "sees" many types of substrate material: black, transparent, reflective.. and allows easy placing of tape around die-cut holes



Safety barriers stop the machine immediately if tripped during operation avoiding injury



Magnetic feeding guides for quick and accurate substrate alignment



Tape Application Made Easy



**EKO-TECH Spółka z ograniczoną
odpowiedzialnością spółka komandytowa**
ul. Fabryczna 1B, 42-660 Kalety

tel: 34 3578 624, fax: 34 3527 595

e-mail: info@eko-tech.biz

www.eko-tech.biz | www.converting-tasm.pl